

Solenoid valve (3/2 way)

3V1 Series

AIRTAC



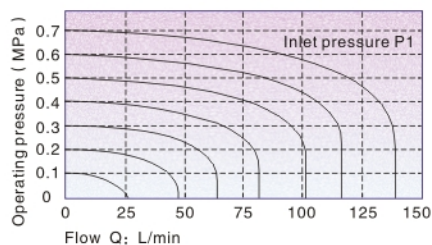
Symbol



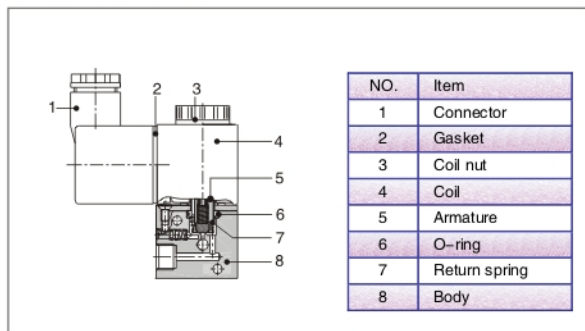
Product feature

- 1、Direct acting type and normally closed mode, flexible in direction change;
- 2、No need to add oil for lubrication;
- 3、Several valves can be installed integrately to save installation space;
- 4、Affiliated manual devices are equipped to facilitate installation and debugging;
- 5、Several standard voltage grades are optional;

Flow chart



Inner structure



Specification

Model	3V1-M5	3V1-06
Fluid	Air (to be filtered by 40um filter element)	
Acting	Direct acting	
Port size ①	M5	1/8"
Valve type	3 port 2 position	
Lubrication	Not required	
Operating pressure	0~0.8MPa(0~114Psi)	
Proof pressure	1.5MPa(215Psi)	
Temperature ℃	-20~70	
Orifice size	φ1.2mm	
Material of body	Aluminum alloy	

① PT thread、NPT thread and G thread are available.

Coil specification

Item	Specification
Standard voltage	AC220V、AC110V、AC24V、DC24V、DC12V
Scope of voltage	AC: ±15% DC: ±10%
Power consumption	AC: 3.5VA DC: 3.0W
Protection	IP65 (DIN40050)
Temperature classification	B Class
Electrical entry	Terminal、Grommet
Activating time	0.05 sec and below
Max. frequency ①	10 cycle/sec

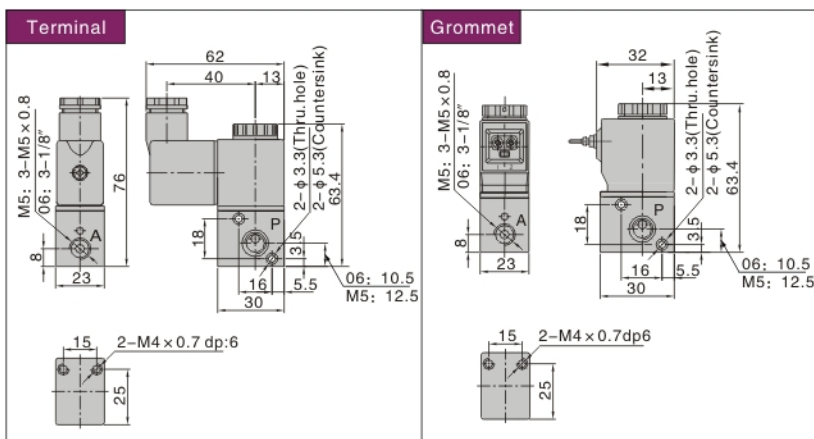
① The maximum actuation frequency is in the no-load state.

Ordering code

3V	1	—	06	—	A	—	□	—	P
Model 3V: Solenoid valve (3/2 way)	Code 1: 1 Series		Port size M5: M5 06: 1/8"		Voltage A: AC220V B: DC24V C: AC110V E: AC24V F: DC12V		Electrical entry Blank: Terminal I: Grommet		Thread type P: PT T: NPT G: G

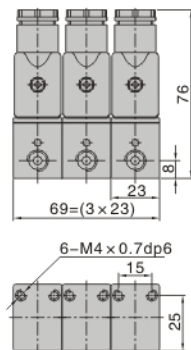
①When the thread is M5 type, the code is blank.

Dimensions

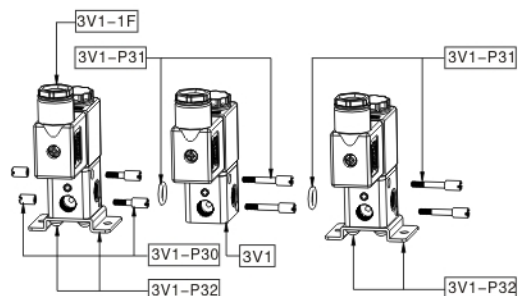


Series connection

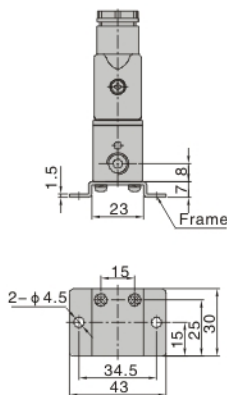
Dimensions(3F)



How to joint



Dimensions(1F)



Product structure

Connection Amount Q.TY	3V1	3V1-P30	3V1-P31	3V1-P32
3V1-□-□-1F	1	0	0	1
3V1-□-□-2F	2	1	1	1
3V1-□-□- nF	n	1	n-1	2

Note: n is the number of junction valve, and $n \geq 3$

Ordering code for series

3V1	—	06	—	A	—	□	—	3F	—	P
Model		Port size		Voltage		Electric entry		Number of stations		Thread type
3V1: Solenoid valve (3/2 way)		M5: M5 06: 1/8"		A: AC220V B: DC24V C: AC110V E: AC24V F: DC12V		Blank: Terminal I: Grommet		1F: 1 Station 2F: 2 Stations 3F: 3 Stations 20F: 20 Stations		① P: PT T: NPT G: G

①When the thread is M5 type, the code is blank.

The above codes have included the series accessories, so it is unnecessary to order the accessories specially. But if you like, you could order as follows.

Code of accessories	Accessory name	Part code	Part name	Quantity
3V1-P30	Coupling screw assembly	F-3V1002N	Coupling screw(S)	2
		F-3V1003N	Coupling screw(M)	2
3V1-P31	Coupling screw assembly	GOR20008N75	O-Ring	1
		F-3V1004N	Coupling screw(L)	2
3V1-P32	Bracket assembly	F-3V1001N	Fixed mounting	1
		GSDA04008WA	Cross round head screw	2